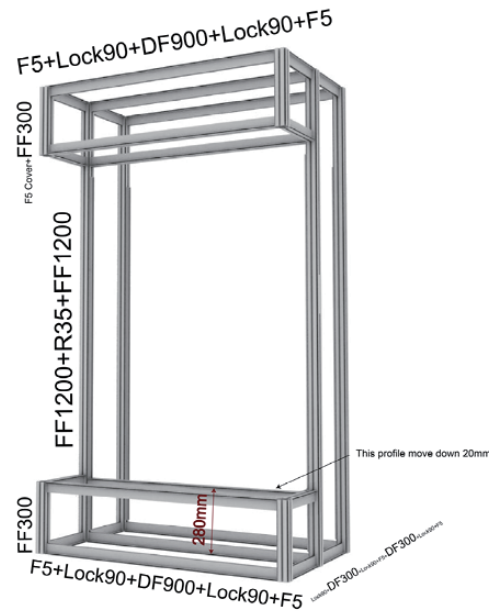
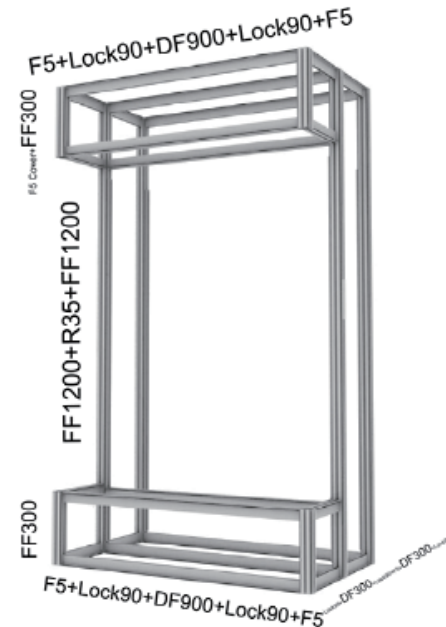


TE-19F-14DS05 USER GUIDE

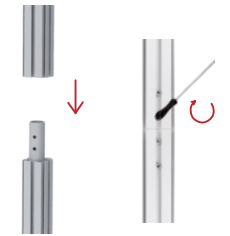


B TE-19F-14DS05S



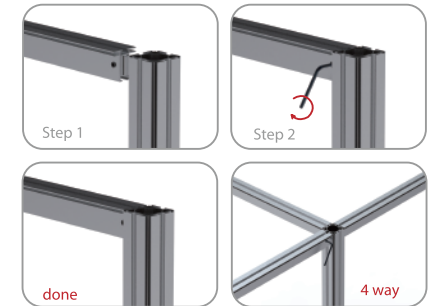
A TE-19F-14DS05A

1 F5 Profile Connector

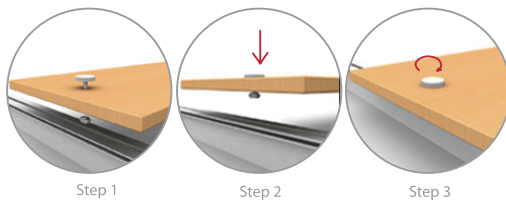


Note: Screws on the vertical frame should not be on the same line with slat wall panels

2 & 4 D4/F5 Profile Connector



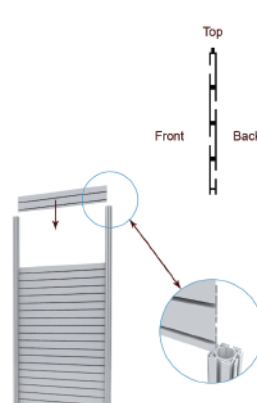
6 Shelf Installation



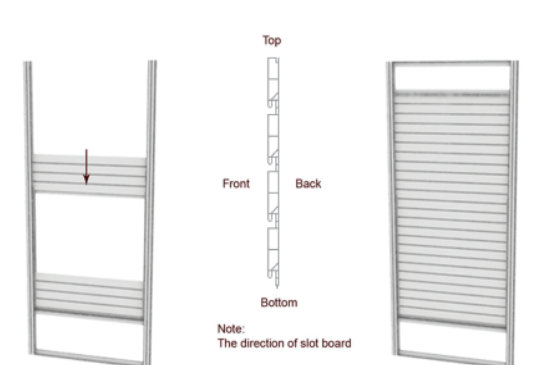
5 Light Panel Installation



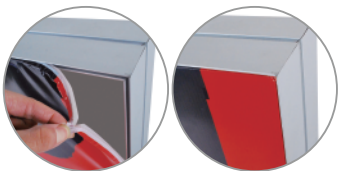
3/A AL. Slat Wall



3/B Pvc Slat Wall



7 Printing Installation



* Four corner frist

step1:
From top to bottom, inserted "L7" under.

step2:
From top to bottom, inserted slat wall under.

step3:
With D4 stuck slat wall