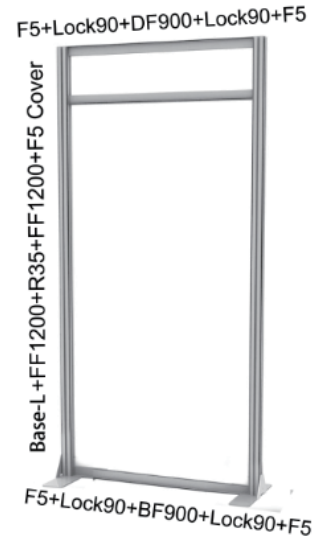
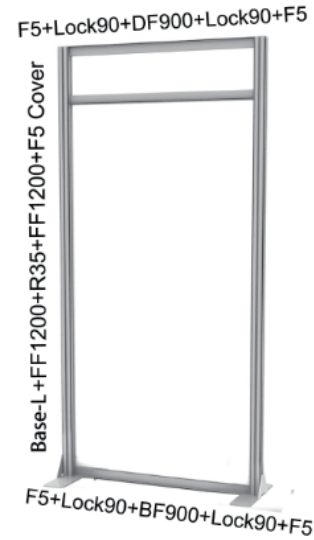


TE-19F-14DS02 USER GUIDE

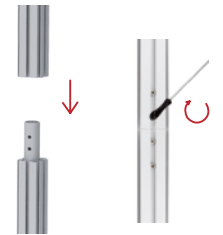


B TE-19F-14DS02S



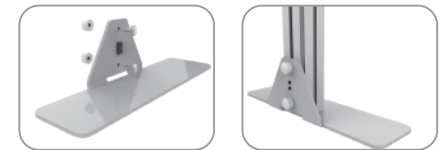
A TE-19F-14DS02A

1 F5 Profile Connector

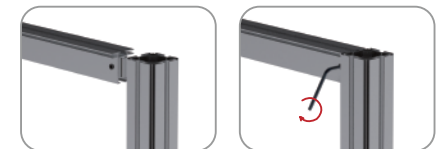


Note: Screws on the vertical frame should not be on the same line with slat wall panels

2 Base Connector



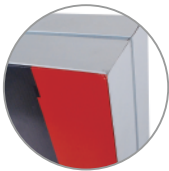
3 D4/F5 Profile Connector



Step 1

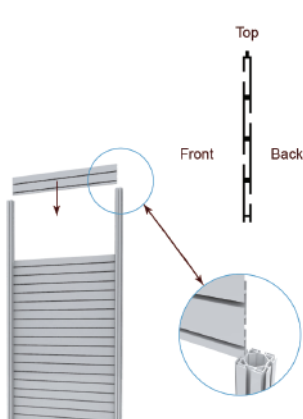
Step 2

5 Printing Installation



* Four corner frist

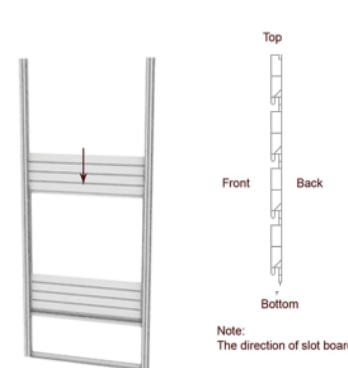
4/A AL. Slat Wall



4/B Pvc Slat Wall



step1:
From top to bottom, inserted "L7" under.



step2:
From top to bottom, inserted slat wall under.



step3:
With D4 stuck slat wall